

# ARTCC ARGENTINO AD 2.SARF

NO VALIDO PARA NAVEGACION REAL. ADAPTADO PARA SU UTILIZACION EN UN AMBITO VIRTUAL  
SARF – FORMOSA

## AD 2.17 ESPACIO AEREO ATC

### Zona de Control:

- |                                     |   |
|-------------------------------------|---|
| 1. Designación:                     | Zona de Control Formosa   |
| 2. Límites verticales:              | FL 065<br>GND   |
| 3. Clasificación del espacio aéreo: | C   |
| 4. Distintivo de llamada:           | FORMOSA TORRE   |
| 5. Observaciones:                   | Se brinda Servicio de Control de Aeródromo. El Servicio de Control de Aproximación lo brinda RESISTENCIA CONTROL.                 |
| 6. Altitud de transición:           | 3000 FT.  |
| 7. Nivel de transición:             | QNH de 977 a 994      FL 050<br>QNH de 995 a 1013      FL 045<br>QNH de 1014 a 1031      FL 040<br>QNH de 1032 a 1050      FL 035 |

## AD 2.18 INSTALACIONES DE COMUNICACIONES ATS

SERVICIO	DISTINTIVO DE LLAMADA	FRECUENCIA	OBSERVACIONES
TWR	Formosa Torre	119.100	-

## AD 2.19 CARTAS AERONAUTICAS

- |                       |  |
|-----------------------|--|
| - Plano de aeródromo: | SARF.APT   |
| - Cartas IAC:         | SARF.IAC NO.1 RWY 22<br>SARF.IAC NO.2 RWY 04<br>SARF.IAC NO.3 RWY 04 |

(DEJADO EN BLANCO INTENCIONALMENTE)

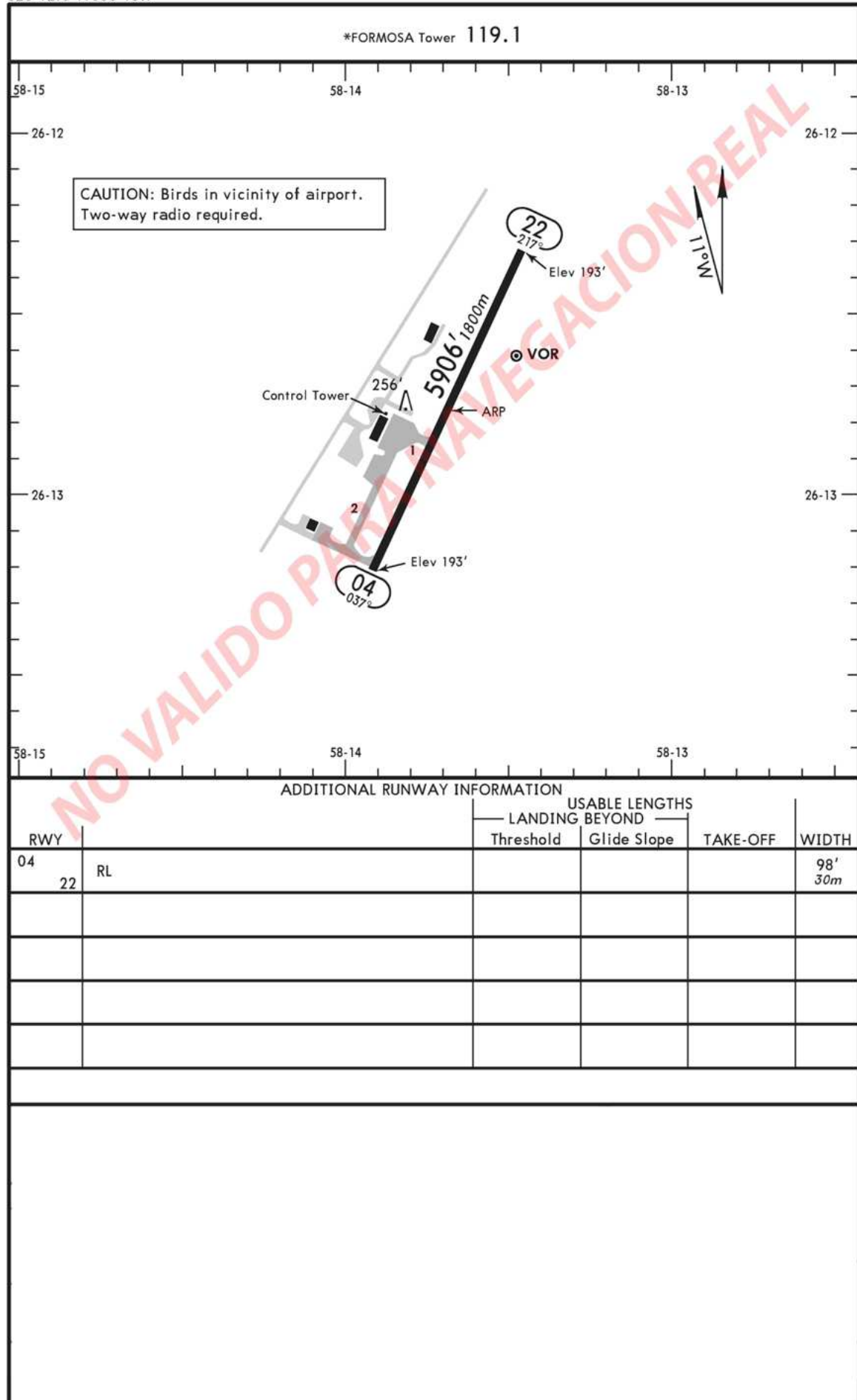
APT

SARF

Apt Elev 193'  
S26 12.8 W058 13.7

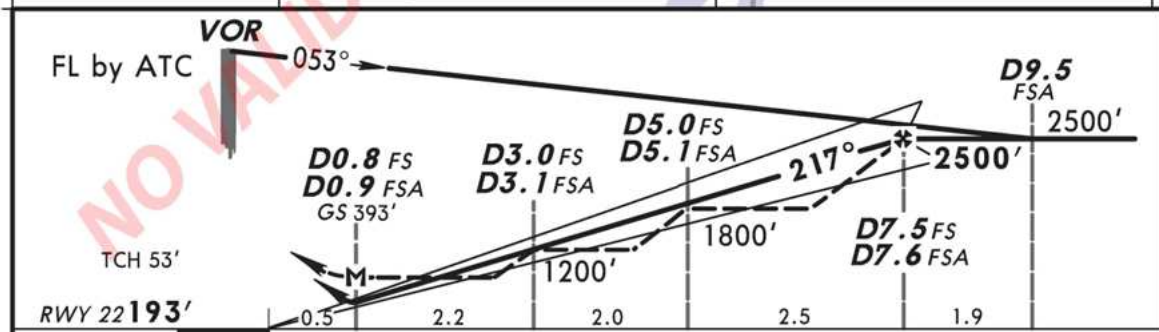
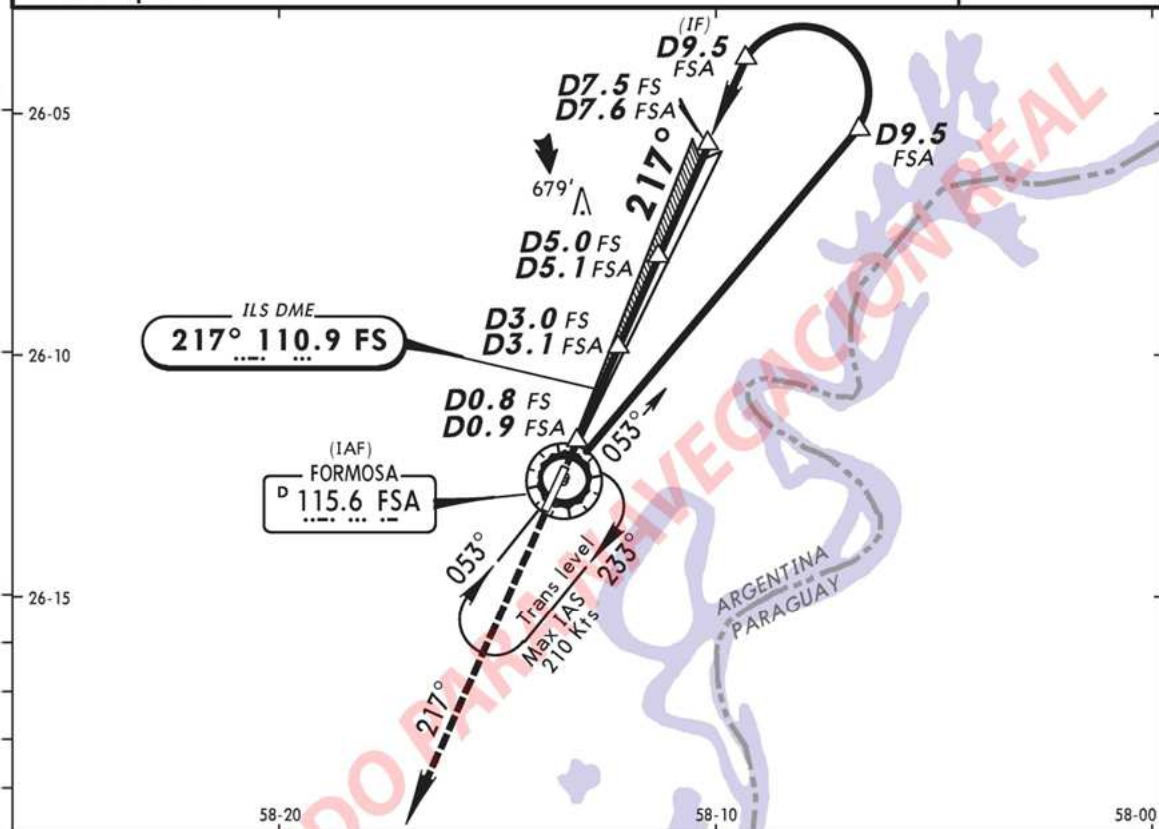
FORMOSA, ARGENTINA

FORMOSA



SARF  
FORMOSAFORMOSA, ARGENTINA  
No. 1 VOR DME ILS DME Rwy 22

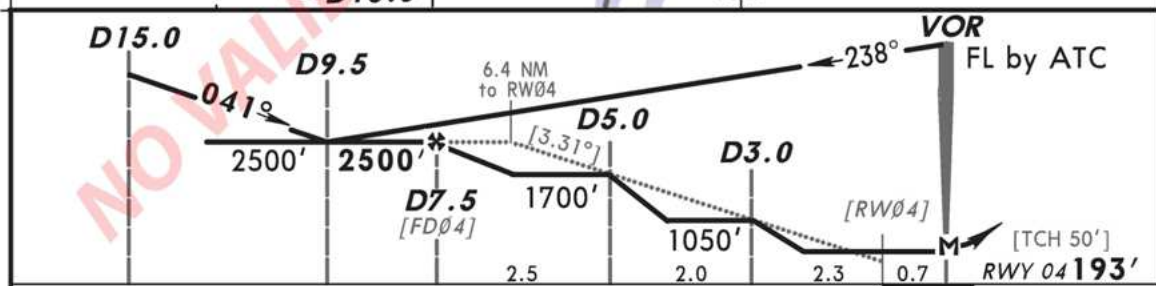
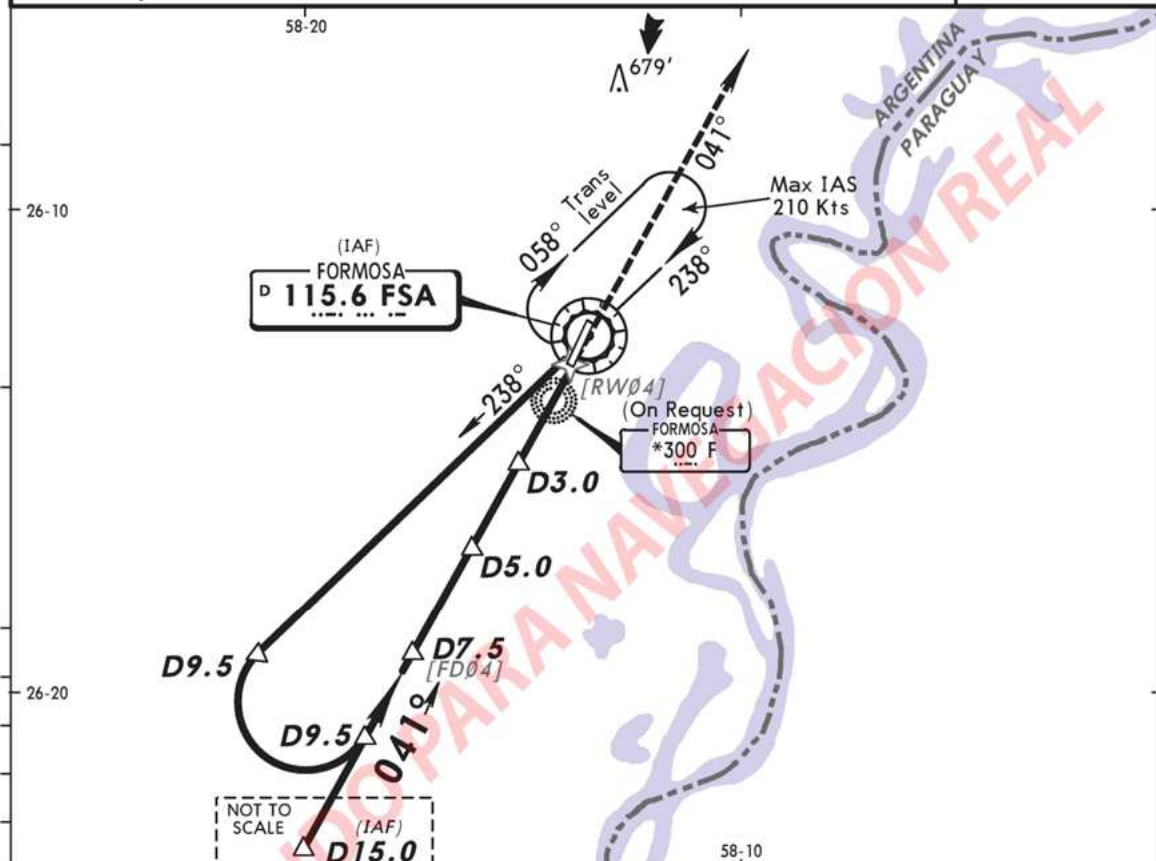
				*FORMOSA Tower	
				119.1	
LOC FS 110.9	Final Apch Crs 217°	Minimum Alt D7.5 FS D7.6 FSA 2500' (2307')	ILS DA(H) 393' (200')	Apt Elev 193' Rwy 22 193'	<div>3000'</div> <div>MSA FSA VOR</div>
MISSED APCH: Maintain 217° climbing to 3000' and follow instructions from CONTROL.					
Alt Set: hPa 1. DME required.		Rwy Elev: 7 hPa	Trans level: By ATC	Trans alt: 3000'	



Gnd speed-Kts		70	90	100	120	140	160		217°	3000' ↑
GS 3.00°		377	484	538	646	753	861			
MAP at D0.8 FS/D0.9 FSA										
D5.0 FS/D5.1 FSA to MAP 4.2		3:36	2:48	2:31	2:06	1:48	1:35			
STRAIGHT-IN LANDING RWY22								CIRCLE-TO-LAND		
ILS DA(H) 393' (200')				LOC (GS out) MDA(H) 755' (562')				Max Kts	Not Authorized Southeast of Rwy 04-22 Centerline MDA(H)	
A	1200m			2000m			100	700' (507')-2000m		
B							135	700' (507')-2800m		
C							180	700' (507')-3700m		
D							205	1380' (1187')-4600m		

SARF  
FORMOSAFORMOSA, ARGENTINA  
No. 2 VOR DME Rwy 04

				*FORMOSA Tower	
				119.1	
VOR FSA 115.6	Final Apch Crs 041°	Minimum Alt D7.5 2500' (2307')	MDA(H) 560' (367')	Apt Elev 193' Rwy 04 193'	<div>3000'</div> <div>MSA FSA VOR</div>
MISSED APCH: Maintain 041° climbing to 3000' and follow instructions from CONTROL.					
Alt Set: hPa      Rwy Elev: 7 hPa      Trans level: By ATC      Trans alt: 3000'					
1. DME Required.					

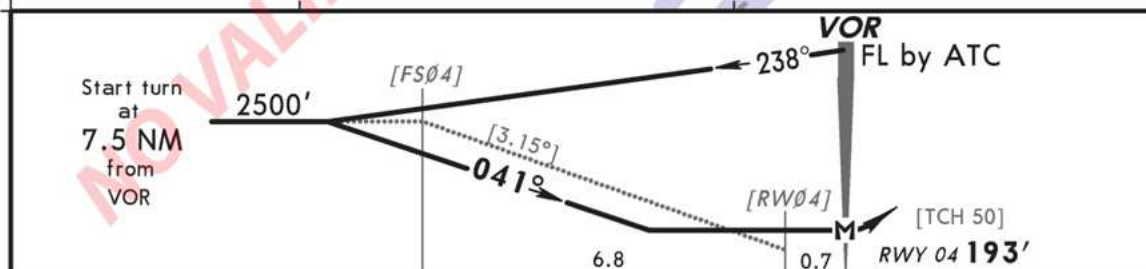
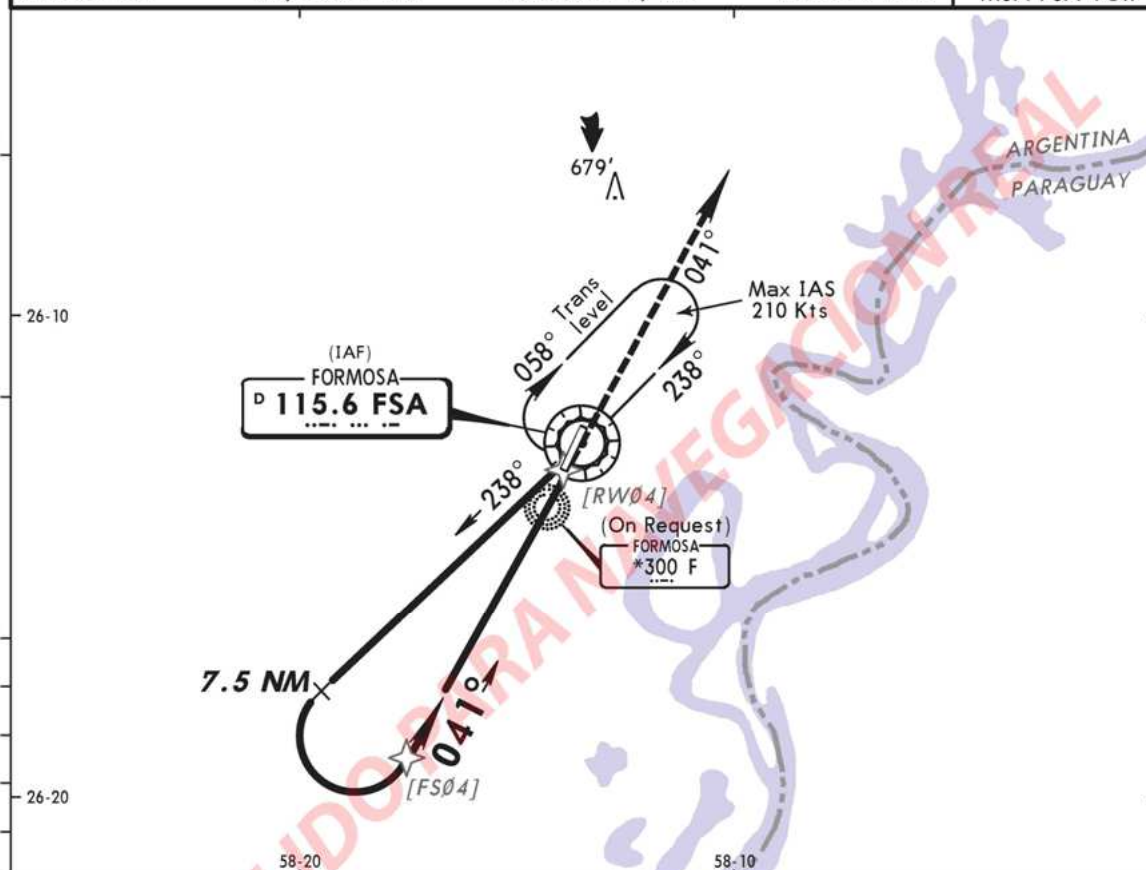


Gnd Speed-Kts		70	90	100	120	140	160	<div>041°</div> <div>3000'</div> <div>↑</div>	
Descent angle [3.31°]		410	527	586	703	820	937		
MAP at VOR or D7.5 to MAP		7.5	5:09	4:00	3:36	3:00	2:34		
STRAIGHT-IN LANDING RWY04								CIRCLE-TO-LAND	
MDA(H) 560' (367')								Not Authorized Southeast of Rwy 04-22 Centerline	
A	2000m						Max Kts	MDA(H)	
B							100	700'(507')-2000m	
C							135	700'(507')-2800m	
D							180	700'(507')-3700m	
	2400m						205	1380'(1187')-4600m	



SARF  
FORMOSAFORMOSA, ARGENTINA  
No. 3 VOR Rwy 04

				*FORMOSA Tower	
				119.1	
VOR FSA 115.6	Final Apch Crs 041°	No FAF	MDA(H) 700' (507')	Apt Elev 193' Rwy 04 193'	<div>3000'</div> <div>MSA FSA VOR</div>
MISSED APCH: Maintain 041° climbing to 3000' and follow instructions from CONTROL.					
Alt Set: hPa		Rwy Elev: 7 hPa	Trans level: By ATC	Trans alt: 3000'	



Gnd speed-Kts	70	90	100	120	140	160		
Descent Gradient 5.5% or Descent angle [3.15°]	390	501	557	668	780	891		
MAP at VOR								
STRAIGHT-IN LANDING RWY 04							CIRCLE-TO-LAND	
MDA(H) <b>700'</b> (507')							Not Authorized Southeast of Rwy 04-22 Centerline	
A						2000m	Max Kts	MDA(H)
B						2400m	100	700' (507') - 2000m
C						3200m	135	700' (507') - 2800m
D							180	700' (507') - 3700m
							205	1380' (1187') - 4600m